

House - Semi-Detached (EPC Rating:)

54 STOPFORD AVENUE, BLACKPOOL,
LANCASHIRE, FY2 0QF

PCM

£895 PCM



3 Bedroom House - Semi-Detached located in Lancashire

Nestled on the charming Stopford Avenue in Blackpool, this immaculate semi-detached house is an ideal home for a small family or working professionals seeking comfort and convenience. The property has been well-maintained and offers a delightful living space that is both inviting and practical.

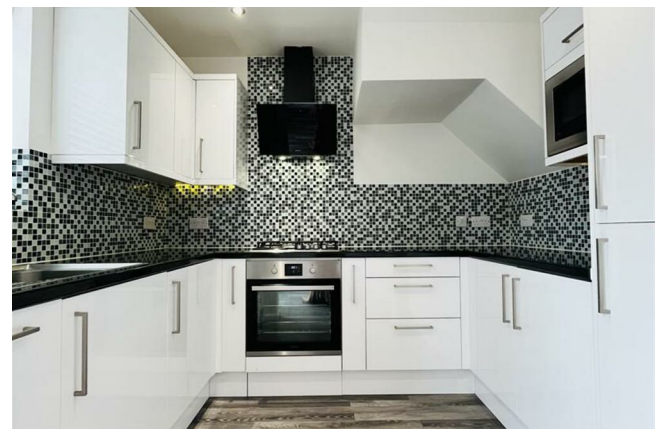
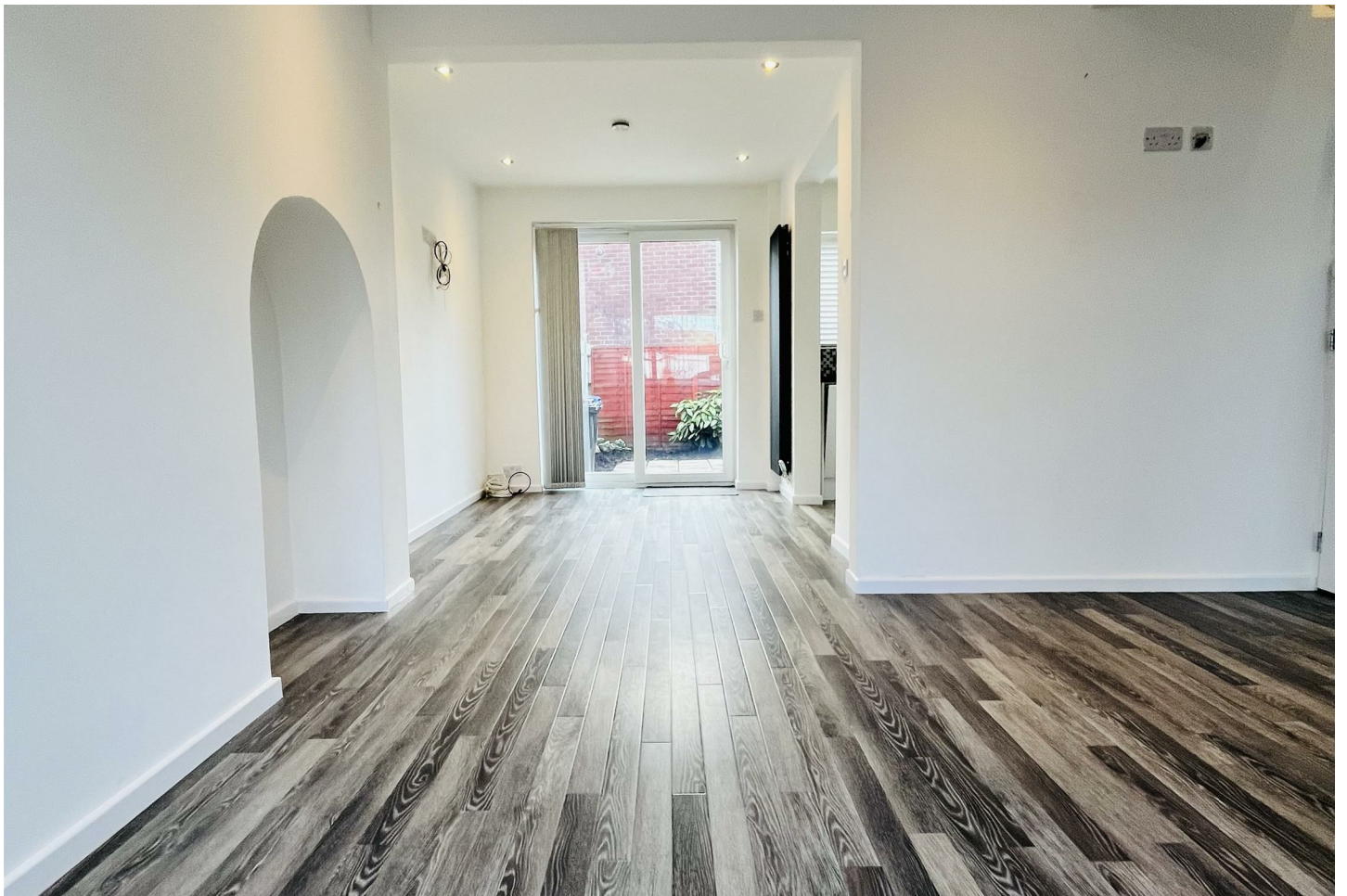
The house features one open plan spacious reception room, perfect for relaxing or entertaining guests. With three well-proportioned bedrooms, there is ample space for family members or guests to enjoy their own privacy. The bathroom is equipped with a modern double shower, providing a refreshing and stylish alternative to a traditional bath.

This property is available to let immediately, making it a fantastic opportunity for those looking to move in without delay. The location is not only appealing but also offers easy access to local amenities, schools, and transport links, ensuring that everything you need is within reach.

In summary, this semi-detached house on Stopford Avenue is a wonderful choice for anyone seeking a comfortable and well-presented home in Blackpool. With its immaculate condition and practical layout, it is sure to meet the needs of modern living. Do not miss the chance to make this lovely property your new home.

Rent: £895.00 per calendar month Deposit: £1000.00. Holding Deposit: £200.00

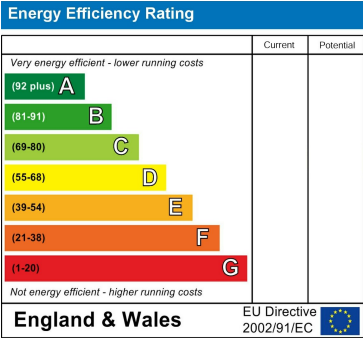
All applicants will need a working, homeowner guarantor to support your application. All tenants and guarantors are to meet the affordability criteria, this is calculated per property depending on the rent amount. Should you not have a personal guarantor, an alternative option may be available to you, please ask for details.



Council Tax Band

B

Energy Performance Graph



Call us on

01253 886444

hello@lsblackpool.com
lsblackpool.com

Agents Note: Whilst every care has been taken to prepare these particulars, they are for guidance purposes only. All measurements are approximate and are for general guidance purposes only and whilst every care has been taken to ensure their accuracy, they should not be relied upon and potential buyers are advised to recheck the measurements.